

ShowerTablet

Bath thermostat 350 for exposed installation

Surfaces: **White/Chrome** Article Number: **13107400**



Description

product features

- projection 195 mm
- 2 outlets
- will not run two outlets at same time
- centre distance: 150 ± 12 mm
- flow rate of hand shower at 3 bar: 14 l/min
- thermostat cartridge, shut-off/ diverter valve
- safety lock at 40° C
- temperature limitation adjustable
- with isolated water conduction
- non-return valve
- with silencer
- material handles: metal
- shelf finish: aluminium anodized
- material cover: safety glass
- surface of the cover at color variant -000 = mirror glass, at color variant -400 = white glass
- connection type: R $\frac{1}{2}$
- connection dimension: DN15
- dirt filter included

Technology



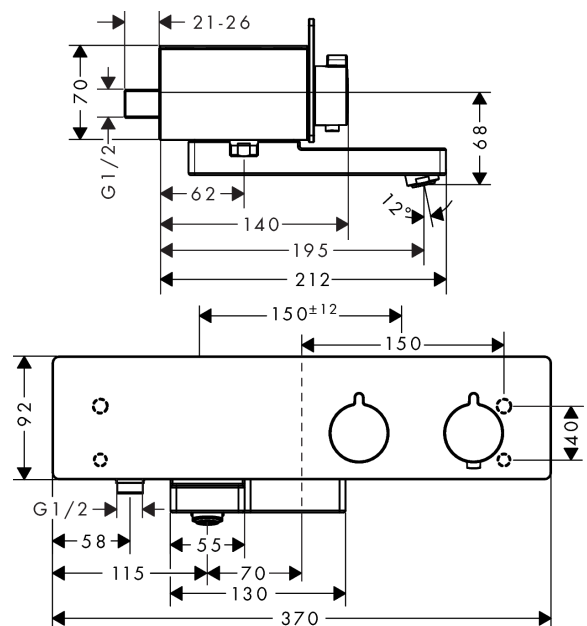
Design awards



Product image



Scale drawing



ShowerTablet

Bath thermostat 350 for exposed installation

Surfaces: **White/Chrome** Article Number: **13107400**



Flowchart

